



takeuchi TL11R3

COMPACT TRACK LOADER

Operating Weight ■ 11,650 lb
Horsepower ■ 107.3 hp
Rated Operating Capacity ■ 2,735 lb

TOUGH. POWERFUL. RELIABLE.

The TL11R3 Compact Track Loader has an operating weight of 11,650 lbs and a 107.3-horsepower engine, making it a versatile and well-balanced machine that excels in a wide range of applications. Its radial lift boom design is engineered to deliver superior breakout forces, making the TL11R3 particularly well-suited for grading and dirt work. The TL11R3's operator station features an intuitive 8-inch touchscreen multi-information display that integrates Bluetooth radio and air conditioning controls within the screen. It also includes a standard rearview camera, electric-over-hydraulic (EH) joystick controls, an adjustable suspension seat, and a large cup holder—all designed to keep operators informed, comfortable, and less fatigued. EH controls ensure smooth operation for both travel and loader functions while enabling a range of new features that optimize productivity. Additionally, a heavy-duty rear door and a tilt-up cab provide exceptional access to the TL11R3's engine and routine inspection points.



PRODUCT FEATURES & SPECIFICATIONS

ENGINE

- EU Stage V / EPA Tier 4 Compliant
- Turbocharged
- DOC+DPF+SCR Exhaust After Treatment
- Automatic Fuel Bleed System
- Double Element Air Cleaner
- Active Power Control
- High Capacity Fuel Tank
- Engine Safety Start System on Right Console
- Engine Auto Stop
- Parking Brake
- Idle Up in Cold Weather
- High-Capacity Radiator, Hydraulic Oil Cooler Mounted Side-by-Side on Swing Out Frame
- Engine Preheat
- Engine Block Heater (cab only)

OPERATOR STATION

- ROPS/FOPS (Level I, TOP Guard Level II on high flow)
- Tilt Up Operator's Station
- Deluxe High Back Adjustable Suspension Seat
- 12V Power Outlet
- 2" Retractable Seat Belt
- Radio with Bluetooth (cab only)
- Heat & Air Conditioner (cab only)
- Joystick Pattern Change (ISO or H)
- Foot throttle (Accel./Decel.)
- Pressurized Cab with Roll-up Door, Defrost and Front Wiper
- Polycarbonate Door (high flow only)

ELECTRICAL

- 8" Touchscreen Multi-Informational Display
- Rubberized Weatherproof Push Buttons
- 12-volt System with 80 amp Alternator
- LED Light Package; 2 Forward
- Backup Alarm & Horn
- 14-Pin Connector
- 14-Pin Detent
- Rearview Camera
- 270° Rearview Camera (standard on high flow, optional on standard flow)
- Steering Drift Adjustment
- Travel Joystick Sensitivity Adjustment
- Passcode Keyless Push-Button Start



TAKEUCHI FLEET MANAGEMENT

- 5-Year Standard Service
- Minimize Downtime
- Remote Diagnostics
- Utilization Tracking
- Proactive Maintenance
- Control Costs
- Geofencing

UNDERCARRIAGE AND FRAME

- Double Flanged Front and Rear Idlers
- 2-Speed Travel
- High Torque Planetary Final Drive
- 17.7" Rubber Crawlers
- Creep Mode
- Slip Detection
- Speed-Sensitive Ride Control (standard on high flow, optional on standard flow)
- Automatic Transmission
- Permanently Sealed Track Rollers with Metal Face Seals
- Fully Welded Frame with Integrated Cross Members
- Grease Type Track Adjuster
- Rear Bumper Integrated into Frame
- Front and Rear Tie-Down & Lift Points

HYDRAULIC & WORKING EQUIPMENT

- Electric-Over-Hydraulic Joystick Controls
- Radial Lift Arm Design
- Arm Height Limit (optional)
- Self-Leveling Up (standard)
- Self-Leveling Down (optional)
- Arm & Bucket Return to Position (optional)
- Loader Joystick Sensitivity Adjustment
- Arm Float
- Proportional Auxiliary Controls with Detent
- Pressure Relieving Flat Face Coupler Body
- Hydraulic Quick Coupler (cab standard)
- Steel Hydraulic Tank with Fluid Sight Gauge
- Air Breather & Filter in Hydraulic Tank
- High Flow Auxiliary Hydraulics (optional)
- Secondary Auxiliary Circuit (standard with high flow only)

OPERATING PERFORMANCE

Operating Weight		
Canopy	11,650 lb	(5,285 kg)
Cab	11,980 lb	(5,435 kg)
Tipping Load	7,825 lb	(3,550 kg)
Rated Operating Capacity	2,735 lb	(1,240 kg)
Operating Load at 50% of Tipping Load	3,913 lb	(1,775 kg)
Bucket Breakout Force	7,958 lb	(3,610 kg)
Lift Arm Breakout Force	7,126 lb	(3,232 kg)
Traction Force	13,196 lb	(5,986 kg)
Ground Pressure		
Canopy	4.71 psi	(32.5 kPa)
Cab	4.84 psi	(33.4 kPa)
Travel Speed		
Low	4.8 mph	(7.8 km/h)
High	7.5 mph	(12.0 km/h)
Operating capacity of compact track loaders is rated according to SAE J818 at no more than 35% of the tipping load.		

HYDRAULIC SYSTEM

Auxiliary Flow			
Primary Circuit	23.1 gpm	(87.6 L/min)	
Secondary Circuit	23.1 gpm	(87.6 L/min)	
High Flow	40.5 gpm	(153.4 L/min)	
Hydraulic System Pressure	3,480.9 psi	(24 MPa)	

ENGINE

Make/Model	Kubota / V3800-TIE5B		
Displacement	230 cu in	(3.8 L)	
Horsepower @ 2,400 rpm	107.3 hp	(80 kW)	
Maximum Torque @ 1,500 rpm	271.4 ft-lb	(368 Nm)	

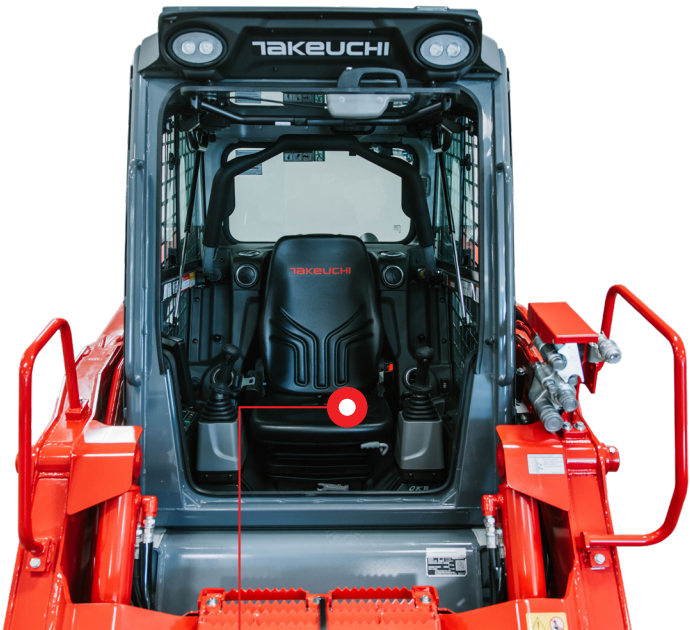
FLUID CAPACITIES

Engine Lubrication	14 qt	(13.2 L)
Cooling System	16.9 qt	(16 L)
Fuel Tank Capacity	33.4 gal	(126.5 L)
Hydraulic Reservoir Capacity	15.6 gal	(58.9 L)
Hydraulic System Capacity	22.2 gal	(84 L)
DEF Tank Capacity	4.8 gal	(18 L)
Fuel Consumption (65% of Full Load)	3.9 gal/h	(14.8 L/h)



**RADIAL LIFT
DESIGN**

MACHINE DIMENSIONS



SPACIOUS OPERATOR STATION

MACHINE DIMENSIONS			
A	Overall Operating Height	13 ft 11.1 in	(4,245 mm)
B	Max. Lift Height to Bucket Pin	10 ft 6.0 in	(3,200 mm)
C	Dump Height Fully Raised	7 ft 11.3 in	(2,420 mm)
D	Dump Reach Fully Raised	2 ft 11.2 in	(895 mm)
E	Dump Angle	40°	
F	Rollback Angle	30°	
G	Track Ground Contact Length	5 ft 2.8 in	(1,595 mm)
H	Machine Length	9 ft 11.3 in	(3,030 mm)
I	Transport Length	12 ft 8.6 in	(3,875 mm)
J	Transport Height	7 ft 7.7 in	(2,330 mm)
K	Departure Angle	29°	
L	Clearance Circle with Bucket	8 ft .8 in	(2,460 mm)
M	Clearance Circle without Bucket	4 ft 10.6 in	(1,490 mm)
N	Clearance Circle Rear	5 ft 10.2 in	(1,785 mm)
O	Track Width	17.7 in	(450 mm)
P	Ground Clearance	12.4 in	(315 mm)
Q	Overall Width without Bucket	6 ft	(1,830 mm)

