

KOMATSU®

WASTE SOLUTIONS

WASTE
PACKAGES



Photos may include optional equipment.

DOZER MACHINES

D65EX-18 D85PX-18
D65PX-18 D85EX-18
D155AX-8

EXCAVATOR MACHINES

PC210LC-11
PC360LC-11
PC390LC-11

WHEEL LOADER MACHINES

WA200-8 WA470-8
WA270-8 WA475-10
WA320-8 WA480-8
WA380-8 WA500-8

WALK-AROUND



WASTE PACKAGES

Variable Geometry Turbocharger (VGT) uses a hydraulic actuator to provide optimum air flow under all speed and loading conditions.

Diesel Particulate Filter (DPF) and Selective Catalytic Reduction (SCR) system reduces particulate matter and NOx while providing automatic regeneration that does not interfere with daily operation.

Fluid neutral or better

Total Fuel & DEF (Diesel Exhaust Fluid) is less than fuel consumed by the prior model.

Closed-center Load Sensing System (CLSS) provides quick response and smooth operation to maximize productivity.

Rearview monitoring system (standard) displays the area behind the machine onto the wide landscape view color monitor screen.

Komatsu Auto Idle Shutdown helps reduce non-productive engine idle time and reduces operating costs.

Operator Identification System records KOMTRAX® machine operation and application data for up to 100 individual operators.

The KOMTRAX® telematics system is standard on Komatsu equipment with no subscription fees. Using the latest wireless technology, KOMTRAX® transmits valuable information such as location, utilization, and maintenance records to a PC or smartphone app. Custom machine reports are provided for identifying machine efficiency and operating trends. KOMTRAX® also provides advance machine troubleshooting capabilities by continuously monitoring machine health.

Large LCD color monitor panel

- 7" high resolution display
- Rear view camera display integrated into the default monitor screen
- On-board diagnostics do not require use of a laptop computer
- Includes an ecology gauge and provides "Ecology Guidance" for greater fuel efficiency
- Easy-to-navigate menus allow operators to change settings, review machine performance records, and track periodic maintenance items.

Enhanced working environment

- Large, quiet, and pressurized cab
- Aux plug for audio player and two 12 volt connections
- High capacity, heated, air suspension seat



DOZER WASTE PACKAGE



Auto Reversing Fan

Allows fan to auto reverse based on adjustable interval and duration



Trash Rack

Ensures good operator visibility and increases blade capacity



Relocated Hydraulic Cooler

Moved to rear of machine to increase cooling efficiency



Track Shoe Holes

Allows debris to be pushed through and reduces track compacting



Cab Air Pre-cleaner

Removes large particles and extends the life of the cab air filter



Additional Sealing & Deflector Bars

Chassis and door seals reduce amount of debris entering engine compartment. Deflector bars redirect larger debris.



Powered Underguard

Provides access to engine compartment to clean accumulated debris



Photos may include optional equipment.



Relocated A/C Condenser

Mounted to the roof to protect it from debris and to increase cooling efficiency



Engine Pre-cleaner

Blocks and removes large particles from the air before they reach the engine air filter



Additional LED Work Lights

Improves visibility over trash rack and guards protect the light bulbs from debris.



Front and Rear Striker Bars

Reduces debris from riding up on the tracks and damaging the chassis



Final Drive Seal Guards

Provides an extra level of protection from wear and contamination due to debris. The clamshell design ensures a tight fit around the final drive housing used hardened hardware and bolt head protectors.



Rear Box

Optimizes machine balance and has bolt-on rear striker bars along with a hitch



Tank Guard

Protects the sides and rear of the fuel and hydraulic tank from damage and debris



Engine Thermal Guard

Covers the exhaust manifold, KDPF, SCR system and hot side of the turbocharger, reducing the potential for combustible debris to come in contact with hot surfaces

DOZERS



Photos may include optional equipment.

	Engine Power	Operating Weight	Blade Capacity
D65EX-18 Semi-U	217 HP @ 1950 rpm 162 kW @ 1950 rpm	50,259 lb 22,797 kg	14.8 yd ³ 11.3 m ³
D65EX-18 Power Angle	217 HP @ 1950 rpm 162 kW @ 1950 rpm	53,076 lb 24,075 kg	14.5 yd ³ 11.1 m ³
D65PX-18 Straight Tilt	217 HP @ 1950 rpm 162 kW @ 1950 rpm	53,136 lb 24,102 kg	12.9 yd ³ 9.9 m ³
D65PX-18 Power Angle	217 HP @ 1950 rpm 162 kW @ 1950 rpm	56,337 lb 25,554 kg	15.1 yd ³ 11.5 m ³
D85EX-18 Semi-U	264 HP @ 1900 rpm 197 kW @ 1900 rpm	70,718 lb 32,077 kg	18.4 yd ³ 14.1 m ³
D85PX-18 Straight Tilt	264 HP @ 1900 rpm 197 kW @ 1900 rpm	69,860 lb 31,688 kg	18.4 yd ³ 14.1 m ³
D155AX-8 Semi-U	354 HP @ 1900 rpm 264 kW @ 1900 rpm	94,421 lb 42,828 kg	26.8 yd ³ 20.5 m ³
D155AX-8 Full-U	354 HP @ 1900 rpm 264 kW @ 1900 rpm	94,421 lb 42,828 kg	33.2 yd ³ 25.4 m ³

*Operating weight shown includes lubricant, coolant, full fuel tank, ROPS cab, and operator

Efficient Engine

- Diesel engine provides excellent fuel economy
- Tier 4 Final emissions certified

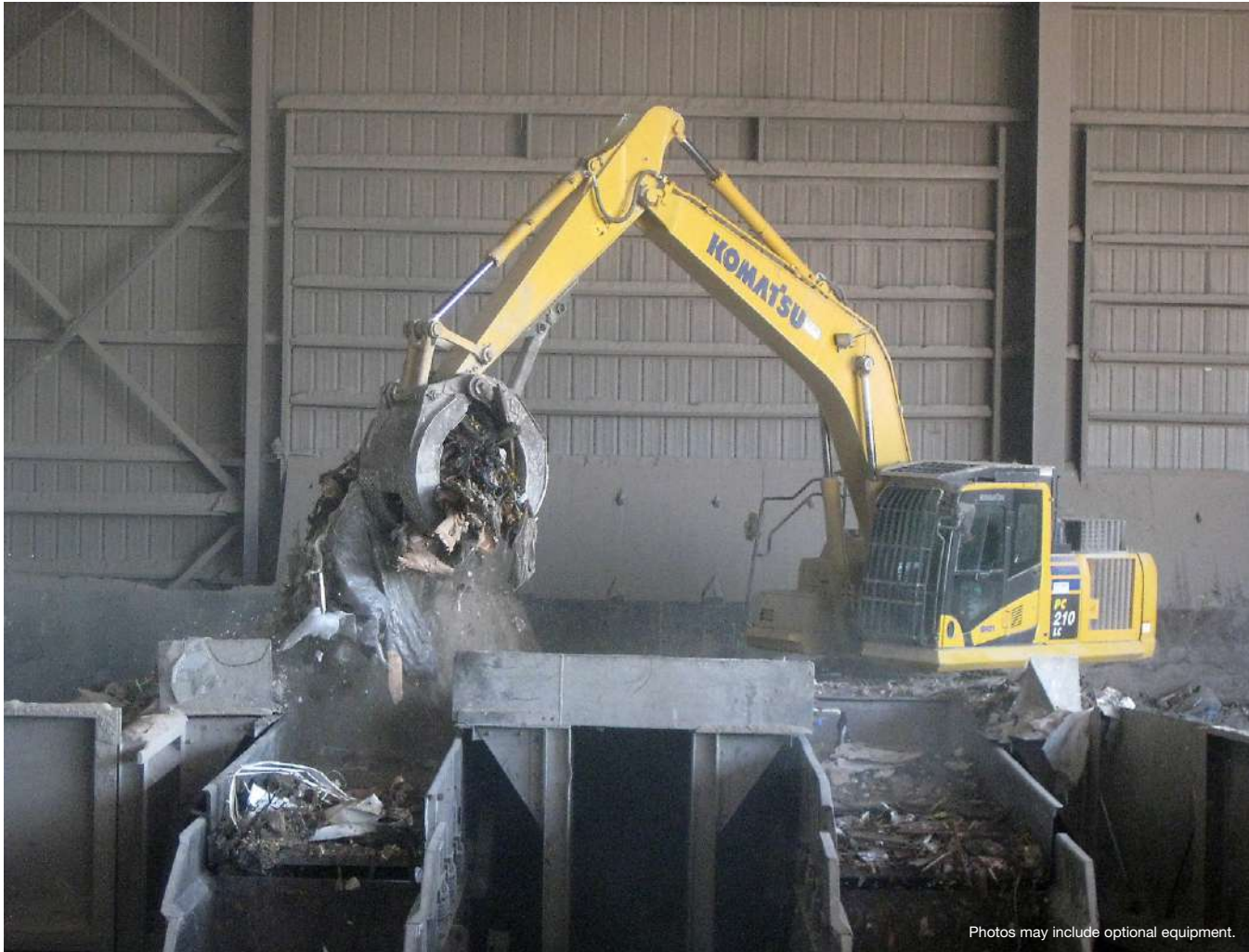
Ergonomic Operator Controls

- Palm Command Control System (PCCS)
- Automatic/manual shift selectable mode

Hydrostatic Steering System (HSS)

- Provides smooth power to both tracks when turning

EXCAVATORS



Photos may include optional equipment.

Comfortable Working Space

- Wide spacious, climate controlled, and pressurized cab

Unrivaled Hydraulic Performance

- Working mode selection allows for application optimization

Durability

- Large individual steel castings in boom foot, boom tip, and arm tip provide long term durability

Serviceability

- Easy access to centralized engine oil check points

	Engine Power	Operating Weight	Max Lift Capacity
PC210LC-11	165 HP @ 2000 rpm 123 kW @ 2000 rpm	51,397 - 53,882 lb 23313 - 24440 kg	40,850 lbs 18500 kg
PC360LC-11	257 HP @ 1950 rpm 192 kW @ 1950 rpm	78,645 - 80,547 lb 35627 - 36535 kg	45,280 lbs 20540 kg
PC390LC-11	257 HP @ 1950 rpm 192 kW @ 1950 rpm	87,867 - 90,441 lb 39856 - 41023 kg	44,700 lbs 20250 kg

*Operating weight shown includes lubricant, coolant, full fuel tank, ROPS cab, and operator

EXCAVATOR WASTE PACKAGE



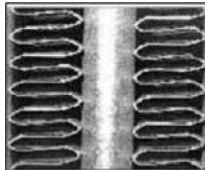
Chassis Seal Package

Reduces the amount of debris entering the engine compartment

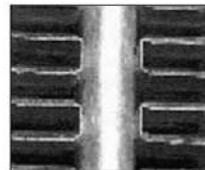


Engine Pre-Cleaner

Removes large particulates from the engine air resulting in longer air filter life



Standard Cooler
1.75mm fin spacing



Waste Handler Cooler
4mm fin spacing

Wide Core Cooling Package

Reduces debris accumulation and keeps air flowing through the radiator, hydraulic oil cooler, AC condenser and charge air cooler



Auto Reversing Fan

Keeps radiator clean and manual switch allows for regular purging of the radiator



Cab Air Pre-Cleaner

Provides pre-cleaned, filtered air to the HVAC system and pressurizes the cab, reducing odors and extending HVAC filter life





Photos may include optional equipment.



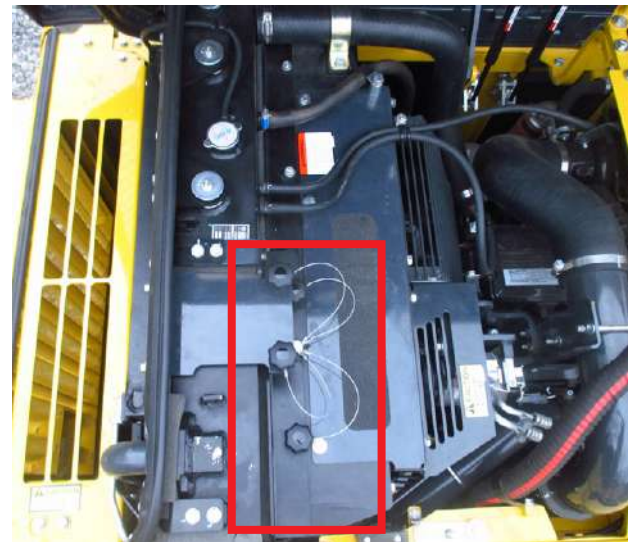
Severe Duty Revolving Frame Under Covers

9 mm thick under covers protect vital internal machine components and include a hinged door for convenient debris removal



Corrugated and Perforated Screen Package

Maximizes effective open area for increased airflow to the coolers



Radiator Cleanout Access Cover

Allows access to the engine side of the radiator for cleaning through a removable cover with tethered knobs



Operator Cab Guarding

OPG level 2 top and front guards are bolt-on options to a base ROPS cab that already meets OPG top guard level 1 requirements

WHEEL LOADER WASTE PACKAGE



Bucket Cylinder Guard

Protects the bucket cylinder rod from falling debris. Bucket position sensors and wiring protection available on WA270 & WA320



Beacon Lamp & Additional Work Lights

Cab is prewired for a roof-mounted beacon or strobe light. Switches for the beacon and rear lights are integrated into the dashboard



Articulation Guard

Protects components in the rear frame from debris and allows for full access to all daily maintenance points



Cooling Screens

Increases effective open area for airflow while reducing amount of debris reaching the coolers



Front Window Guard

Provides an additional layer of protection to the window and operator from large debris



Front & Rear Light Guards

Guards and protects front and rear lights from impact damage





Rear Frame Underguard

Protects the engine oil pan, oil drain and fuel tank drain while reducing amount of debris pulled into rear frame



Front Frame Underguard

Reduces debris buildup and shields power train and hydraulic components. Hinged access panel for easy service access and cleanout



Axle Seal Guards

Adjustable to ensure fit and reduces debris build up around shaft and seals



Fuel Tank Guard

Encloses the exposed surfaces of the fuel tank to minimize damage and transfers impact forces into the rear frame and counterweight



Boom Cylinder Hose Guards

Provides additional protection to the hydraulic hoses



Boom Cylinder Hose Wraps

Protect the boom cylinder hoses from wear, abrasion, and cuts



Rear Frame Powertrain Underguard

Protects the hydraulic pump, motors, and transfer case. Available on WA270 & WA320

Photos may include optional equipment.

WHEEL LOADERS – GUARDING OPTIONS PER MACHINE

Description	WA200	WA270	WA320	WA380	WA470	WA475	WA480	WA500
Air Intake Guard (if fenders are removed)				✓	✓		✓	
Articulation Guard		✓	✓		✓	✓	✓	
Axle Seal Guards (4)		✓	✓	✓	✓	✓	✓	
Beacon Lamp Ready Switch		✓	✓					
Beacon Lamp with Additional Rear Lights (2)				✓	✓	✓	✓	✓
Boom Cylinder Hose Guards (Plates)(2)				✓			✓	✓
Boom Cylinder Hose Wraps (Wraps)(4)		✓	✓	✓	✓	✓	✓	
Bucket Cylinder Guards (HL)		✓	✓	✓	✓		✓	
Bucket Cylinder Guards (STD)		✓	✓	✓	✓	✓	✓	
Cooling Screens (3)	✓	✓	✓	✓		✓		
Front Frame Underguard (2)	✓	✓	✓	✓	✓	✓	✓	✓
Front Light Guards (2)		✓	✓	✓	✓	✓	✓	✓
Front Window Guard		✓	✓	✓	✓	✓	✓	✓
Fuel Tank Guard				✓	✓	✓	✓	✓
Rear Frame Underguard	✓	✓	✓	✓	✓	✓	✓	✓
Rear Frame Underguard, Powertrain		✓	✓					
Rear Light Guard (2)		✓	✓	✓	✓	✓	✓	✓

WHEEL LOADERS



Photos may include optional equipment.

	Engine Power	Operating Weight	Full Turn Tip Load
WA200-8	126 HP @ 2000 rpm 94 kW @ 2000 rpm	25,827 - 26,489 lb 11715 - 12015 kg	13,558 - 16,854 lb 6150 - 7645 kg
WA270-8	149 HP @ 2000 rpm 111 kW @ 2000 rpm	28,208 - 29,079 lb 12795 - 13190 kg	18,761 - 19,886 lb 8510 - 9020 kg
WA320-8	165 HP @ 2100 rpm 123 kW @ 2100 rpm	34,128 - 34,987 lb 15480 - 15870 kg	16,998 - 21,561 lb 7710 - 9780 kg
WA380-8	191 HP @ 2100 rpm 143 kW @ 2100 rpm	40,532 - 41,932 lb 18385 - 19020 kg	22,943 - 29,630 lb 10407 - 13440 kg
WA470-8	272 HP @ 2000 rpm 203 kW @ 2000 rpm	53,352 - 55,579 lb 24200 - 25210 kg	30,975 - 38,493 lb 14050 - 17460 kg
WA475-10	290 HP @ 1600 rpm 216 kW @ 1600 rpm	56,240 - 60,400 lb 25510 - 27397 kg	34,238 - 42,439 lb 15530 - 19250 kg
WA480-8	299 HP @ 2000 rpm 223 kW @ 2000 rpm	56,262 - 56,416 lb 25520 - 25590 kg	36,299 - 36,520 lb 16465 - 16565 kg
WA500-8	353 HP @ 1900 rpm 263 kW @ 1900 rpm	76,897 - 77,856 lb 34880 - 35315 kg	54,622 - 55,373 lb 24776 - 25117 kg

*Full turn tipping and operating weight shown includes lubricant, coolant, full fuel tank, ROPS cab, and operator

** Addition of guarding options and solid tires impact operating weight. Contact your local Komatsu dealer.

Fuel Efficient Engine

- Tier 4 Final emissions certified engines provide exceptional performance while reducing fuel consumption

Low Noise Design

- Rubber mounting leads to a quiet, low-vibration, comfortable operating environment

Power Train Performance

- Komatsu's large-capacity torque converter is optimized for efficiency and has improved acceleration

SUPPORT EQUIPMENT

ARTICULATED TRUCKS

To fully maximize a waste fleet, consider Komatsu's articulated trucks. When the terrain is challenging, and underfoot conditions are severe, customers count on Komatsu's HM articulated truck model line and its Komatsu Traction Control System (KTCS). Payload management can be consistent and maximized through Komatsu's Payload Meter (PLM) system that integrates with KOMTRAX.



INTELLIGENT MACHINE CONTROL DOZERS AND EXCAVATORS

Envision assimilating intelligent Machine Control technology into your fleet. Machines like the PC210LCi-11, PC360LCi-11, D65EXi-18, and D85EXi-18 can impact efficiency using GNSS to aid in cell design, and help monitor waste fill level. When capping a site, iMC machines can track top soil coverage to ensure compliance.



Photos may include optional equipment.

KOMATSU PARTS & SERVICE SUPPORT



KOMATSU CARE®

Program Includes:

*Machines come standard with complimentary factory scheduled maintenance for the first 3 years or 2,000 hours, whichever occurs first.

Planned Maintenance Intervals at:

500/1000/1500/2000 hour intervals. (250 hr. initial interval for some products) Complimentary Maintenance Interval includes: Replacement of oils & fluid filters with genuine Komatsu parts, 50-Point inspection, Komatsu Oil & Wear Analysis Sampling (KOWA) / travel & mileage (distance set by distributor; additional charges may apply).

Benefits of Using Komatsu CARE

- Assurance of proper maintenance with OEM parts & service
- Increased uptime & efficiency
- Factory-certified technicians performing work
- Cost of ownership savings
- Transferable upon resale

Complimentary KDPF Exchanges

Machines come standard with 2 complimentary KDPF exchange units for the first 5 years or 9,000 hours whichever occurs first. The suggested KDPF exchange unit service intervals are 4,500 hours & 9,000 hours. End user must have authorized Komatsu distributor perform the removal & installation of the KDPF.

Complimentary SCR Maintenance

Machines also include 2 factory suggested services of the Selective Catalytic Reduction (SCR) Diesel Exhaust Fluid (DEF) system during the first 5 years or 9,000 hours whichever occurs first. The service includes factory suggested DEF tank flush & strainer cleaning at the suggested service intervals of 4,500 hours & 9,000 hours.

Komatsu CARE® – Advantage Extended Coverage

- Extended Coverage can provide peace of mind by protecting customers from unplanned expenses that affect cash flow
- Purchasing extended coverage locks-in the cost of covered parts and labor for the coverage period and helps turn these into fixed costs



Komatsu Parts Support

- 24/7/365 availability to fulfill your parts needs
- 9 parts Distribution Centers strategically located across the U.S. and Canada
- Distributor network of more than 300 locations across U.S. and Canada to serve you
- Online part ordering through Komatsu eParts
- Remanufactured components with same-as-new warranties at a significant cost reduction



Komatsu Oil and Wear Analysis (KOWA)

- KOWA detects fuel dilution, coolant leaks, and measures wear metals
- Proactively maintains your equipment
- Maximizes availability and performance
- Can identify potential problems before they lead to major repairs
- Reduces life cycle cost by extending component life

* Certain exclusions and limitations apply. Refer to the customer certificate for complete program details and eligibility. Komatsu® and Komatsu Care® are registered trademarks of Komatsu Ltd. Copyright 2019 Komatsu America Corp.

KOMTRAX EQUIPMENT MONITORING

GET THE WHOLE STORY WITH
KOMTRAX

✓ WHAT

- KOMTRAX is Komatsu's remote equipment monitoring and management system
- KOMTRAX **continuously monitors and records** machine health and operational data
- Information such as fuel consumption, utilization, and a detailed history **lowering owning and operating cost**

✓ WHO

- KOMTRAX is **standard** equipment on all Komatsu construction products

✓ WHEN

- Know when your machines are **running or idling** and make decisions that will improve your fleet utilization
- Detailed movement records ensure you know when and where your equipment is moved
- Up-to-date records allow you to **know when maintenance is due** and help you plan for future maintenance needs

✓ WHY

- Knowledge is power - **make informed decisions** to manage your fleet better
- Knowing your idle time and fuel consumption will help maximize your machine efficiency
- **Take control of your equipment** - any time, anywhere

✓ WHERE

- KOMTRAX data **can be accessed virtually anywhere** through your computer, the web or your smart phone
- Automatic alerts keep fleet managers up to date on the latest machine notifications



KOMTRAX

For construction and compact equipment.

KOMTRAX Plus

For production and mining class machines.

AESS947-01

©2021 Komatsu America Corp.

AD05 (POD)

05/21 (EV-1)



Note: All comparisons and claims of improved performance made herein are made with respect to the prior Komatsu model unless otherwise specifically stated.